



A130

hydraulic drill rig



INVT.



A130

IMT, a global leader in the manufacture of drill rigs and a brand which has always been synonymous with quality and reliability in the pursuit of satisfying market demand, is pleased to present a new series of A drill rigs. This new line is unique in its simplicity and flexibility of use, while also perfectly maintaining sturdiness and productivity.

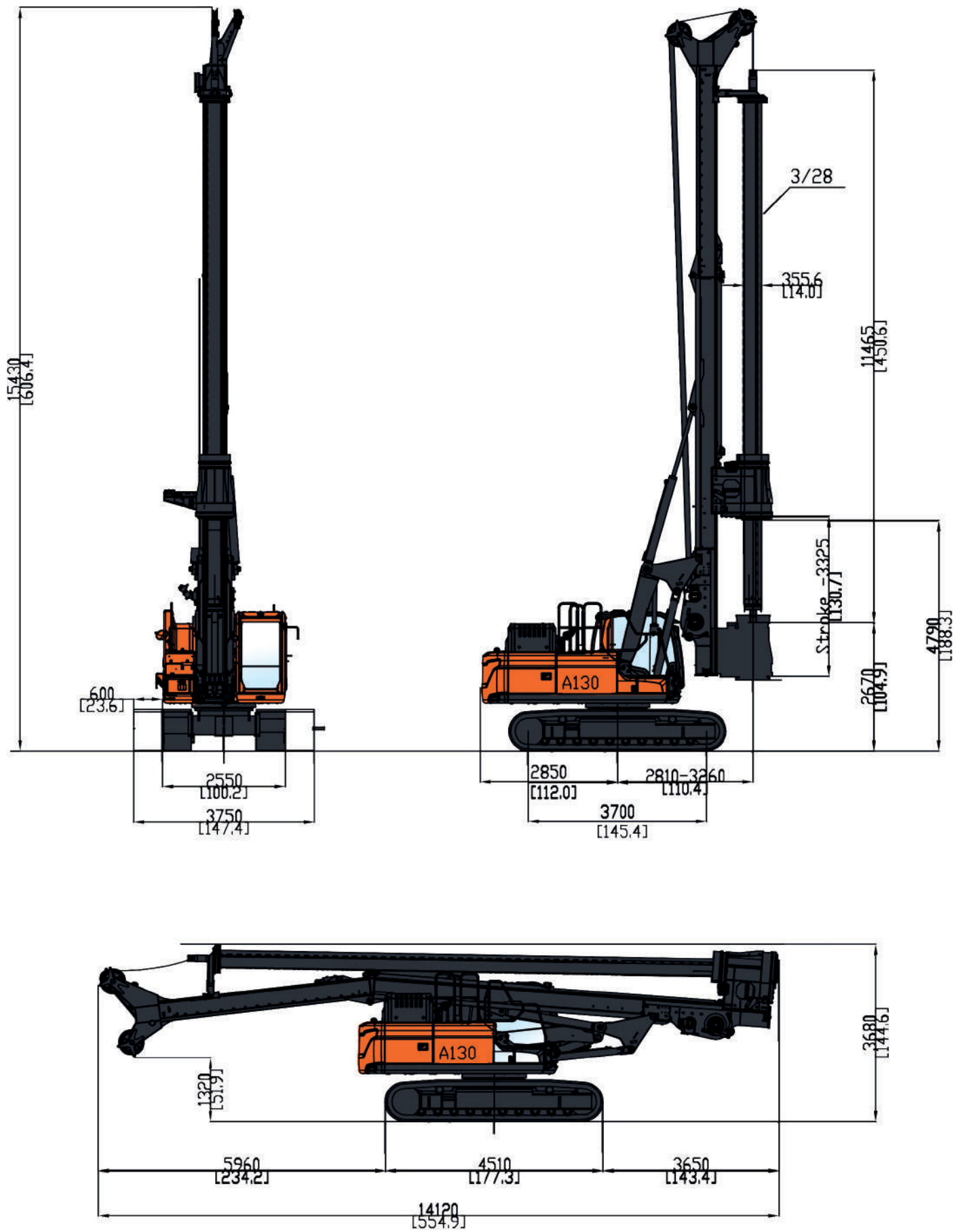
The A130 is the most powerful and high-performance drilling rig in its market segment. Its evident Heavy Duty nature, given by the robustness of the drilling attachment, the widening track and the parallelogram system, in addition to the very high performance that has always distinguished us, make the A130 capable of operating in the most difficult terrain with excellent productivity.

Its compact size and ease of transport make the A130 the best machine in the world to operate in the most confined and difficult areas.



A 130 - Hydraulic Drill Rig

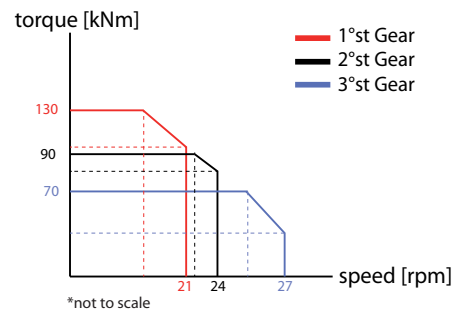
Crowd cylinder version



Technical specifications

A130 Crowd Cylinder

Rotary		
Nominal torque	kNm	130
	lbf ft	95883
Min. Working speed	rpm	7,5
Max. Working speed	rpm	27
Min. Discharge speed	rpm	45
Max. Discharge speed	rpm	105



Winches		
Main winch nominal pull force	kN	130
	lbf	29230
Main winch speed	m/min	90
	ft/min	295
Main winch rope diameter	mm	22
	in	/
Auxiliary winch nominal pull force	kN	60
	lbf	13490
Auxiliary winch Speed	m/min	40
	ft/min	131
Auxiliary winch cable diameter	mm	15
	in	/

Crowd System		
Kelly crowd push	kN	100
	lbf	22485
Kelly crowd pull	kN	165
	lbf	37095
Stroke (mm)	mm	3325
	in	131

Base	IMT	
Undercarriage length/widening range/shoe	mm	4510-2550-3750/600
	in	178/100-145/23,6
Engine Type	Doosan DX 210LC7	
	124 KW (166 HP)@1990 rpm	
Oil tank capacity	l	134
Fuel tank capacity	l	333

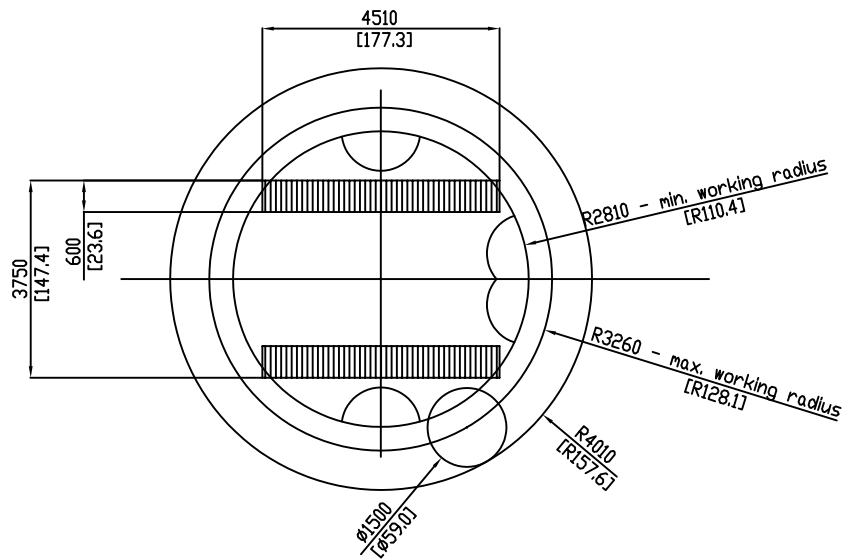
Mast		
Mast raking forward	degree	5°
Mast side raking	degree	±5°
Mast raking backwards	degree	15°
Pile max diameter	mm	1500
	in	60

Kelly bar		
Standard		3/28
Options available		4/30 - 4/38
Operating Weight w/standard kelly bar	t(metric)	34
	lbs	74960



A 130 - Hydraulic Drill Rig

Working area A130 crowd cylinder



A	MAX WORKING RADIUS 3260
B	MAX TOOL DIAMETER Ø1500
C	MIN WORKING RADIUS 2810

Equipment

- STANDARD EQUIPMENT -

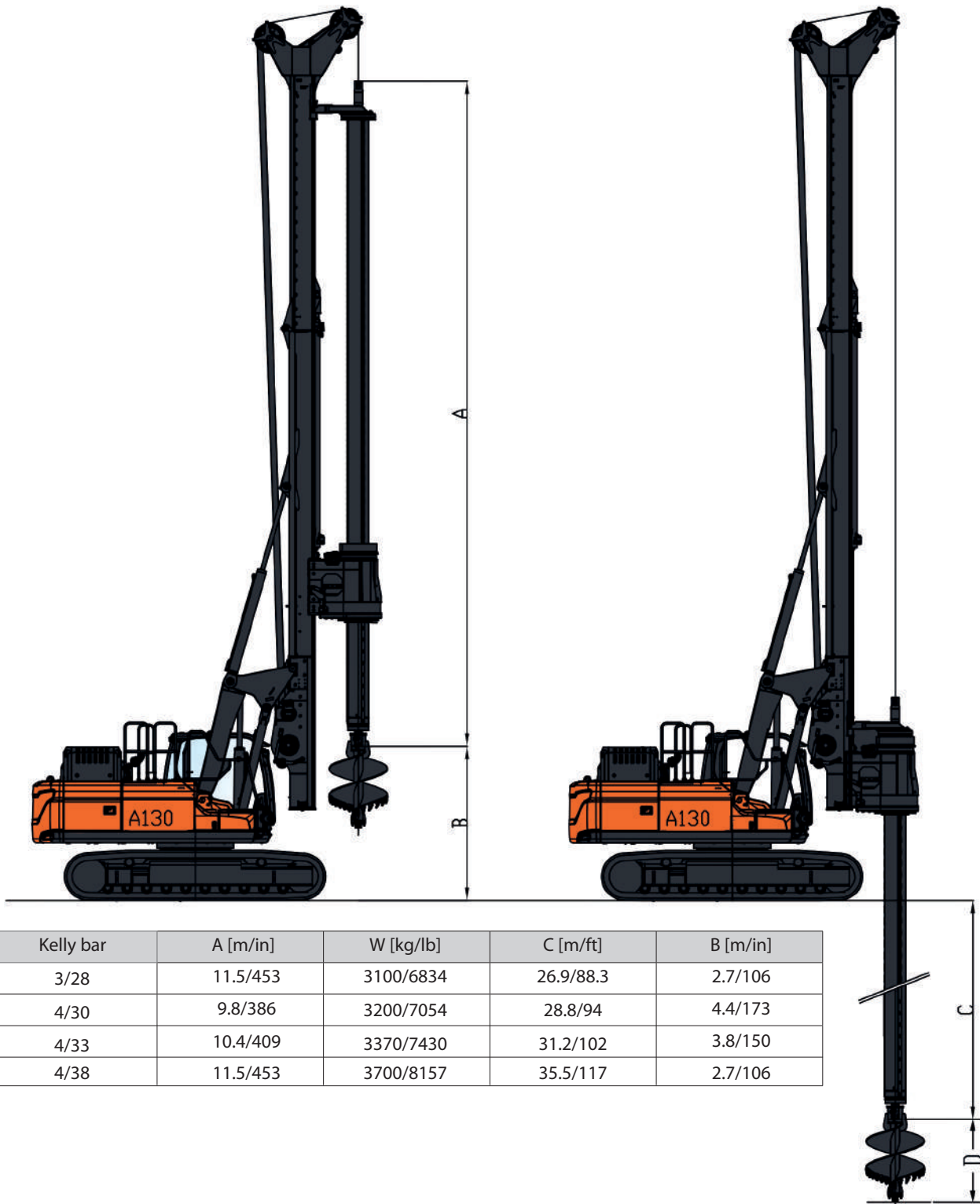
- Air conditioner
- Neutral lever (lock out) for all control
- Guard cat top
- Guard cab front
- Top cabin working lights
- Fuel refill pump
- Engine diagnostic system
- Main and auxiliary load sensing circuit
- Free flow during drilling phase
- Automatic bottom hole stop
- Depth measuring device on main winch
- Mast inclination measurement
- Rear Camera
- Lateral Camera
- Led Lighting System
- Cabin Flashing Light

- OPTIONAL EQUIPMENT -

- Biodegradable oil
- Every kind of Kelly bar
- GPS kit
- Automatic Grease System
- Universal joint

A 130 - Hydraulic Drill Rig

Kelly bar standard version



Kelly bar	A [m/in]	W [kg/lb]	C [m/ft]	B [m/in]
3/28	11.5/453	3100/6834	26.9/88.3	2.7/106
4/30	9.8/386	3200/7054	28.8/94	4.4/173
4/33	10.4/409	3370/7430	31.2/102	3.8/150
4/38	11.5/453	3700/8157	35.5/117	2.7/106

D	1,5 [m]	130x130 mm
Standard square joint 130x130 other dimension available		
Further kelly bars available on request		

A 130 - Hydraulic Drill Rig





Worldwide sales and assistance network



IMT dealers, a global network at your service
IMT, like very few other companies in the field,
has a global commercial and assistance network which is
present in over 30 countries.
From any part of the world IMT clients know which they
can always count on fast and efficient service.



This document is created and distributed by IMT. This document may not be reproduced, modified or exhibited without authorization by IMT srl. All rights reserved. ©

All technical data are indicative and subject to change without notice.



I.M.T. S.r.l. - Industria Meccanica Trivelle
via D'Ancona,39 60027 Osimo (AN) Italy
Tel. +39 071 723341 - Fax +39 0717 133 352
imt@imtspa.com - www.imtspa.com